

TECHNICAL SPECIFICATION

SKU CODE: M1218

BOOK NAME: Chelsea

BOOK NUMBER: MOD13

Brand: York

Care Instructions:     

Colors Available: Beige

Composition: 100% Polyester

Design: Texture

Horizontal Pattern Repeat: 37 Cm

Quality: Jacquard

Usage: Drapery Soft Upholstery

Vertical Pattern Repeat: 96 Cm

Width: 140 CM

GSM: 311

GLM: 435

Martindale Cycle: 43000

Special Finish: Passes The Usa Nfpa 260 Class 1 (ufac)
And Cal 117-se And Bs5852 Source 0

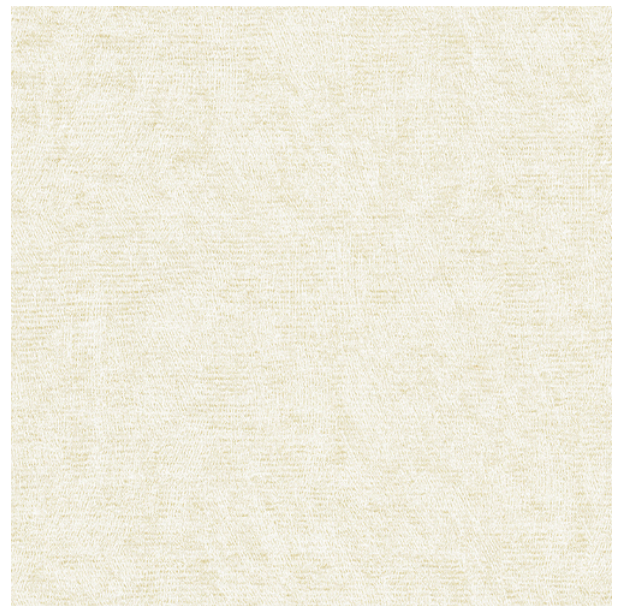
York can assure you that all its products are in accordance with the industrial textile standards. Each of our products is designed/produced to serve its purpose. We can assure you that each shipment is of premium quality. Be it fabric, leather or wall covering, York assures high quality for all its products when properly installed and maintained within the appropriate environments using appropriate cleaning methods.

Live Better



YORK

FURNISHING FABRICS SINCE 1988



THE FIRST ISO CERTIFIED FURNISHING
FABRIC DISTRIBUTOR IN THE MIDDLE
EAST



Office 161, Dubai Textile City, Al Awir, Dubai, UAE
+971 4 364 9675 (YORK)

sales@astyork.com

www.astyork.com

The Largest Stockist in the Middle East and Africa of

 sunbrella®

 **DICKSON**
innovative textiles for your world

 **RAYMAKERS**
TEXTILE & TEXTILE FINISHES

 **FOREST**
DRAPERY HARDWARE

 **Serge Ferrari**

 **SYMPHONY
MILLS**